



GMT MONTHLY MEMBERSHIP PROGRESS REPORT

Results as of: 6/30/2017

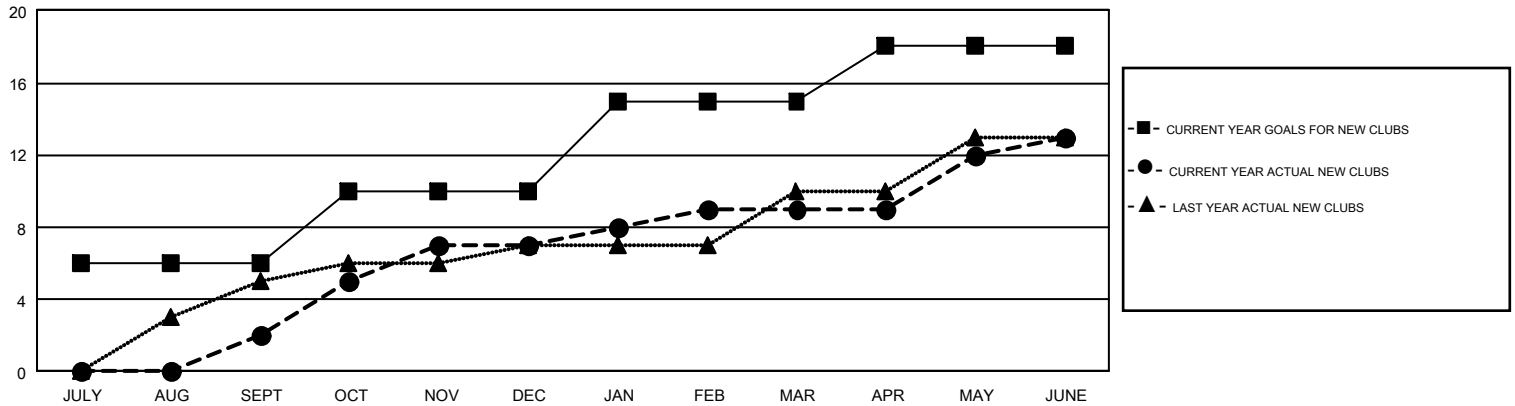
GMT Constitutional Area 6, Group B

GMT: OPEN

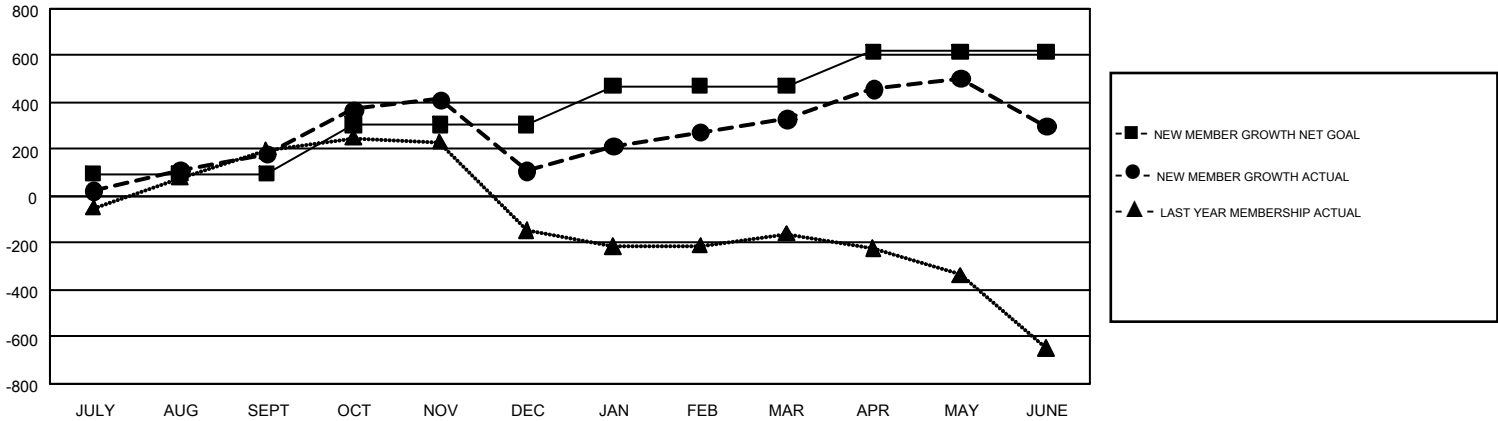
REPORT DOES NOT INCLUDE CLUBS IN UNDISTRICTED AREAS.

| Clubs | | | | Members | | | |
|-----------------------|---------------|-----------|---------------|-----------------------|--|--|--|
| RESULTS FOR 2016-2017 | | | | RESULTS FOR 2016-2017 | | | |
| QUARTER | NEW CLUB GOAL | NEW CLUBS | DROPPED CLUBS | QUARTER | NEW MEMBER GROWTH NET GOAL (not reinstated or transfers) | NEW MEMBER GROWTH ACTUAL (not reinstated or transfers) | DROPPED MEMBERS ACTUAL (including transfers) |
| JULY/AUG/SEPT | 6 | 2 | 2 | JULY/AUG/SEPT | 95 | 380 | 199 |
| OCT/NOV/DEC | 4 | 5 | 16 | OCT/NOV/DEC | 209 | 365 | 438 |
| JAN/FEB/MAR | 5 | 2 | 2 | JAN/FEB/MAR | 167 | 352 | 130 |
| APR/MAY/JUNE | 3 | 4 | 9 | APR/MAY/JUNE | 148 | 644 | 674 |

GOALS AND ACTUAL NEW CLUBS CUMULATIVE



GOALS AND ACTUAL MEMBERS CUMULATIVE



| | | |
|---|---|--|
| DROPPED CLUBS: 29 | 187 CLUBS OF 269 ADDED 1 OR MORE NEW MEMBERS | GENDER DISTRIBUTION MALE: 4,276 (78.91%) FEMALE: 1,143 (21.09%) |
| DROPPED MEMBERS DECEASED: 6 CLUB CANCELLED: 431 OTHER: 1,002 TOTAL: 1,439 | CLICK HERE FOR CUMULATIVE MEMBERSHIP DATA | TOTAL FAMILY UNIT MEMBERS: 2,880 FAMILY MEMBERS PAYING HALF DUES: 2,004 |